




Fiche technique du vêtement / Garment technical data sheet. 8881B.00



Identification de l'article / Item identification					
Code comm.le Industrial Starter/ IS commercial item code:	8881B	Code article fourniss./ Supplier item code*:	SK21	Code fourniss./ Supplier code:	012520
Code couleur Industrial Starter/ Industrial Starter colour code:	040 (blu/blue) 080 (grigio/grey)	<input checked="" type="checkbox"/> [X]	Article du catalogue /Item from catalogue		
		<input type="checkbox"/> []	Article personnalisé /Customized item		
Nom de l'article/Item name:	Veste "REVENGE" / "REVENGE" jacket				

Description de l'article technique / Technical item description			
	Composition / Fabric composition	Couleur/colour (Pantone)	Poids du tissu / Fabric weight [g/m ²]
Tissu extérieur principal / Main outer shell :	100% polyestère "bodkin fleece" / 100% polyester " bodkin fleece"	Bleu-gris clair / Blue-Light Grey	270 +/- 5%
Tissu extérieur de contraste 1/ Contrast 1 outer shell :	100% polyestère "bodkin fleece" / 100% polyester " bodkin fleece"	Gris foncé / Dark Grey	270 +/- 5%
Tissu extérieur contraste 2 anti- abrasion / Anti abrasion contrast 2 outer shell :	97% polyestère 3% spandex maille collée/ 97% polyester 3% spandex bonded mesh	Noir / Black	270 +/- 5%
Doublure des poches / Pocket Lining :	100% polyestère "bodkin fleece" / 100% polyester	Bleu-gris clair / Blue-Light Grey	270 +/- 5%
	210T taffeta / 210T taffeta	Noir / Black	55 +/- 5%
Accessoires /Accessories:	n. 2 tasche frontali, n.1 tasca porta documenti, n.2 tasconi interni / n. 2 front pockets, n.1 document pocket, n.2 inner pockets		
Logos et broderies / Logos & embroideries:	 		
Tailles/Sizes:	S, M, L, XL, XXL, XXXL, 4XL, 5XL		
Emballage /Packages:	1 pièce par boîte - 6 pièces par carton / n. 1 piece per paper box - n. 6 pcs per export carton		
Instructions de lavage / Care label:			

Conformité aux normes CE /Conformity with EC standards		
Cat.EPI/ PPE Category:	I	Normes CE et niveaux de protection / EC standards and protection levels: EN ISO 13688:2013 (Rif. Test Report RdP no: 19RT01113 by RITEX *) *Accredia Lab n. 0315 L
Note informative langues /	IT,ES,CZ,PL,EN,PT,SK,HU,FR,DE,LT,RS,GR,SI,LV,HR,EE,TR,RO	

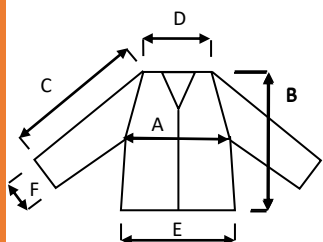
Fiche technique du vêtement / Garment technical data sheet. 8881B.00



Manufacturer's notes languages:

	Mesures des tailles / Size measurements [cm]							
	S	M	L	XL	XXL	XXXL	4XL	5XL
A. Poitrine / Chest:	104	110	116	122	128	134	140	146
B. Longueur tot. / Tot. length:	68	60	72	74	76	78	80	82
C. Manche / Sleeve :	79	81	83	85	87	89	91	92
D. Épaules / Shoulder :	41	43,5	46	48,5	51	53,5	56	58,5
E. Fond / Bottom:	48	51	54	57	60	63	66	69
F. Poignet / Sleeve opening :	10	11	11	12	12	13	13	14

Dessin et photos / Drawing and photo



8881D "REVENGE" al "CUBO" / 8881D "REVENGE" "CUBE"



6 boîtes assorties / n. 6 assorted boxes : M/1, L/2, XL/2, XXL/1

Altavilla Vic.na (Vi), 10/05/2021

Industrial Starter S.p.A.
Via Lago d'Iseo, 26
36077 – Altavilla Vicentina
Vicenza – Italy

Telephone: +39 0444-573422
Telefax: +39 0444-574897
E-mail: info@ind-starter.com
Web: www.industrialstarter.com

Reg. Imprese: Vicenza
Cod. fisc./P. IVA/VAT. n°: IT. 00619090244
R.E.A.: 142034/VI
Cap. Soc. 907.500,00 i.v.

Pagina 2 di 2